

Residential

Conservation Area
Extension, structural
alterations and repairs

Services

Surveys
Design and Planning
Project Management
Party Wall
Interior Design



Extension under construction

Edwardian House, Horsted Keynes



Before

David Jenkins took a derelict semi-detached Edwardian villa in Horsted Keynes Conservation Area and transformed it into a family home with contemporary style in a traditional setting.

The property was not occupied for a number of years after the owner died without any living relatives. The house had to be reclaimed from the ravages of nature.

Planning permission was secured for a loft conversion and an extension to the side. By using carefully matching materials and maintaining the front façade a balance was struck which satisfied the client, planners and local community.

The £130K scheme enabled the ground floor to be opened up and created a kitchen/breakfast room from the old scullery area. First floor bathroom bedroom and en suite were re-planned and an attic created - with great views.

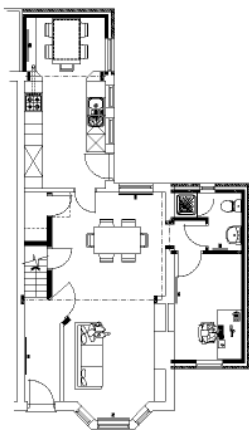
Energy saving timber sliding sash windows were installed in the extension while the

original windows were restored as they were salvageable.

This six month project turned the two bedroomed dilapidated house into a four bedroomed family home with a light spacious feel and with great views over the cricket pitch and an open aspect. With a sensitive touch we brought this house back to life.



Gloss white units and roof windows were chosen to reflect light in the north facing kitchen



Special alternating tread stair minimizes loss of landing space



Completion